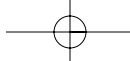


PALLET RACKS

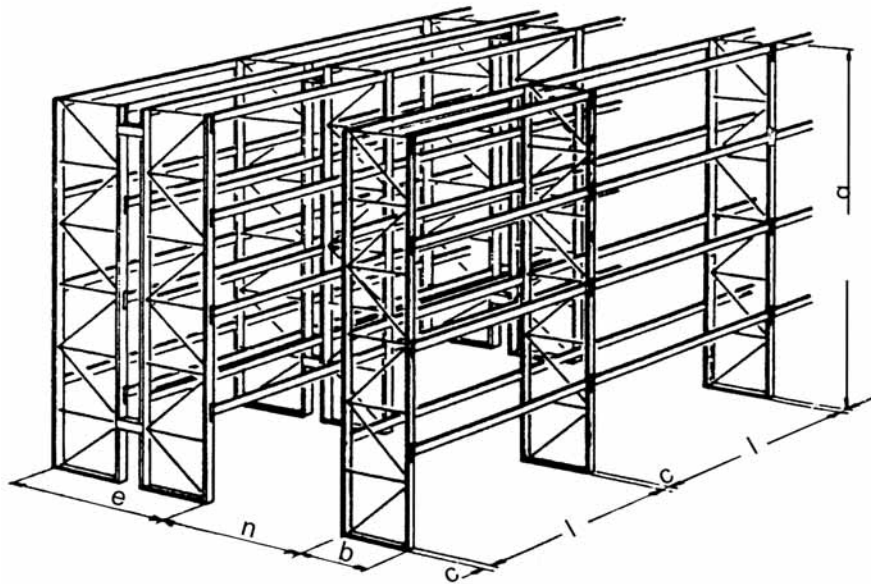


PRO
MAN®



COMPLETED FROM PROJECT...

...TILL THE PRESENTATION FOR THE RUNNING



Completed solution in succession for all system, optimal project, delivery, assembly and presentation to customer

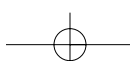


THE CONSTRUCTION FITS THE MOST EXACTING CONDITIONS OF QUALITY



FOR RACKS ARE ISSUED THE CERTIFICATES BY STATE INSTITUTE IN BRNO

Prefabricated simple way enable the height variable as for small stock so that for big in-store systems.



PALLET RACKS

The system is suitable for all pallet types, for different loading capacity.



DRIVE IN RACKS

Ideal method of the bloc storage, specially good for stocks with food.



MOBILE RACKS

Simple construction, the possibility of automatic mode.

RACKS WITH ASCENTABLE PLATFORM

Purposeful utilization of the stock space, suitable for the storage of the small parts.



FLOW RACKS

Suitable for storage by system first to the stock, first from the stock.

CANTILEVER RACKS

Useful for the storage of the bars.





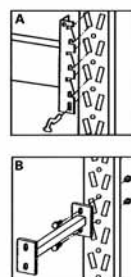
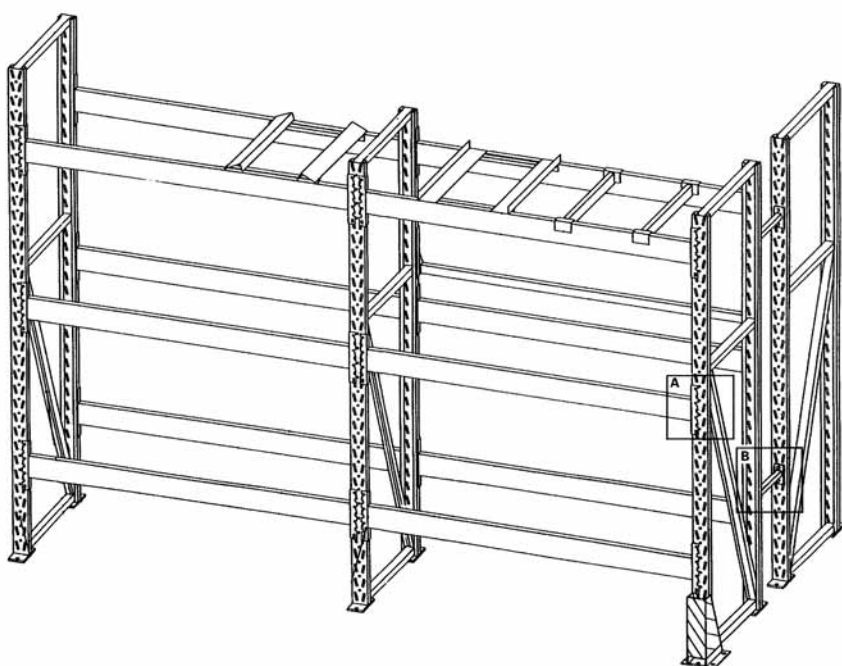
SAMPLES OF RACKS USAGES





PARTS OF RACK CONSTRUCTION

Wide assortment of construction parts for different loading capacity allowed to construct and give the optimal variant of the rack construction.

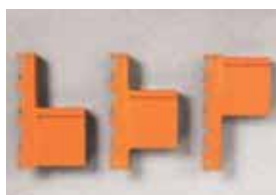
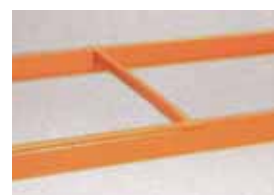


Surface condition of construction is made by burned and powdered colours. The colored designing is in tones RAL by the request of customer. The possibility of galvanized design.



- frame
- velded
- bolted

- traverse



- beam of pallet

- squared traverse



- chipboard shelf

- sided circuit



- shelf with grate

- forhead protection

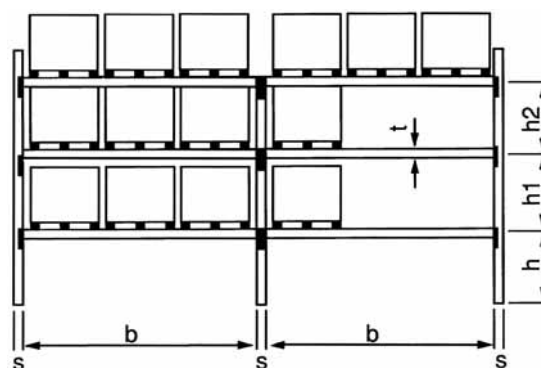


The project of individual parts of pallet racks is simple and for basic orientation you are able to do it yourself. But with pleasant we will help you.

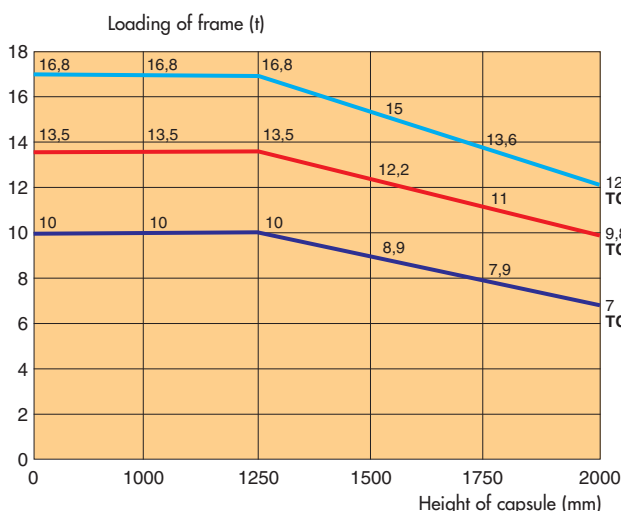


Diagram of racks

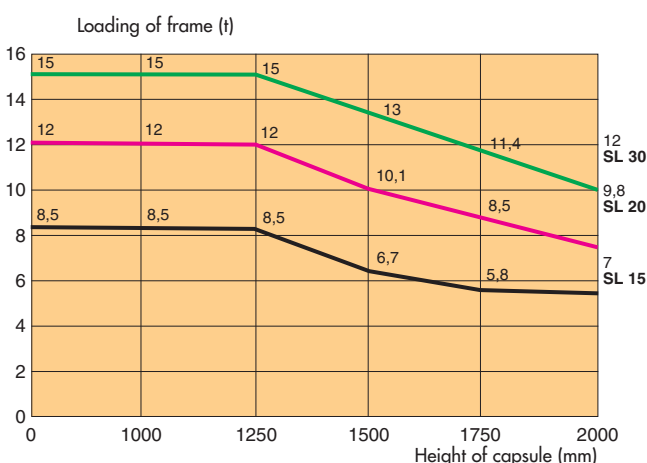
b – clearance of the capsule
 h, h1, h2 – height of layed up level
 s – weight of frame
 t – height of pallet beam



Project of fame – version velded



Project of fame – version bolted



Project of pallet beam

PROFILE Dimensions	H	B	T	ALOWED LOADING OF CAPSULE (kg)				
				Lenght of pallet beam (mm)				
				1800	2200	2700	3300	3600
RT 80	80	40	2	1800	1580	1350	1000	800
RTS 80	80	50	1,5	2900	2200	1600	1150	950
RTS 90	90	50	1,5	3300	2700	2000	1400	1200
RTS 100	100	50	1,5	3800	3180	2600	1940	1660
RTS 110	110	50	1,5	4200	3560	3000	2260	1900
RTS 125	125	50	1,5	4450	3960	3300	2760	2400
RTS 140	140	50	1,5	4500	4400	3900	3260	2960
RTS 160 S	160	50	2	4500	4500	4500	4300	3900
I 80	80	46		2770	2350	1950	1550	1300
I 100	100	55		4500	3950	3250	2800	2600
I 120	120	64		4500	4500	4500	4000	3600
SRT 70	70	34	2	1000	750	600	500	350
SRT 100	100	50	2,5	2600	2320	2000	1700	1400

Solution for You ...
...PROMAN for You